



Reckitt Road, London, W4 2BT

Guide Price £1,100,000

WHITMAN & CO.

SALES · LETTINGS · COMMERCIAL

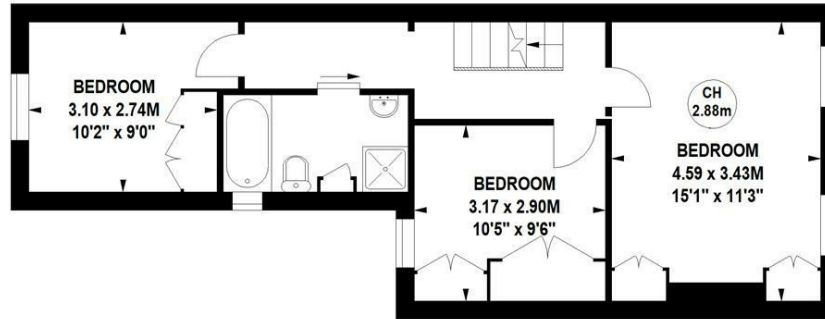
- Sought after Glebe Estate
- Fantastic transport links
- Close to numerous amenities
- South facing garden
- Large loft
- No chain

Tenure - Freehold
Local Authority - Hounslow
Council Tax - Band F

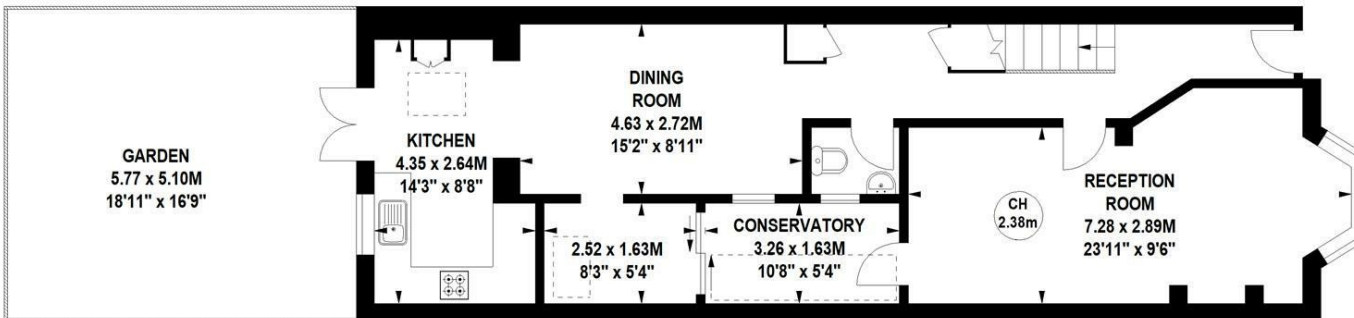
THE PROPERTY

An extremely sought-after three-bedroom period house, ideally located in the ever-popular Glebe Estate, with the added benefit of a private south-facing garden. The property features three double bedrooms, a large loft, a bathroom, a 23' through reception room, a kitchen/breakfast room, a cloakroom, and a private 20' south-facing garden. Ideally situated within close proximity to Turnham Green tube station and the extensive range of shops, bars, and restaurants on Chiswick High Road. No chain.

**Reckitt Road,
Chiswick, W4**
Approximate gross internal area
119.38 sq m / 1285 sq ft



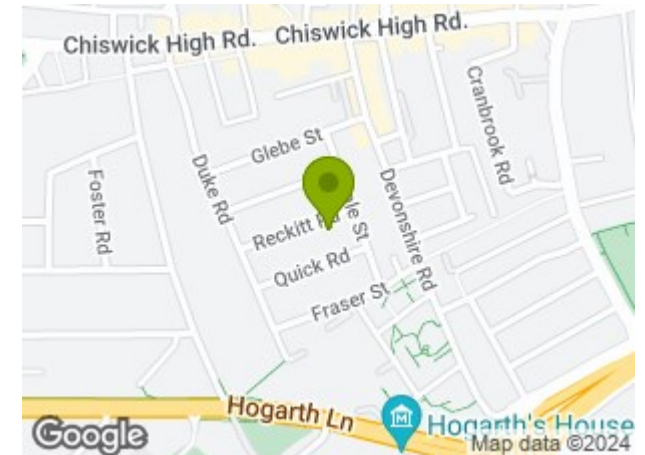
First Floor



Ground Floor

Not to scale, for guidance only and must not be relied upon as a statement of fact.
All measurements and areas are approximate only

SITUATION



5-7 Turnham Green Terrace, Chiswick, London, W4 1RG

Tel 020 8747 8800

E-mail sales@whitmanandco.com

Website www.whitmanandco.com



MISREPRESENTATION ACT 1967

Whitman & Co. for themselves and for the vendors give notice that these particulars do not constitute any part of, an offer of contract. All statements contained in these particulars are made without responsibility on the part of Whitman & Co. or the vendor. None of the statements contained in these particulars is to be relied upon as statements or representations of facts. Any intending purchaser must satisfy himself by inspection or otherwise as to the correctness of each of the statements contained in these particulars. The vendor does not make or give, and neither Whitman & Co. or any person in their employment has any authority to make or give, any representation or warranty whatever in relation to the property.